

HEATER BUFFER TANKS



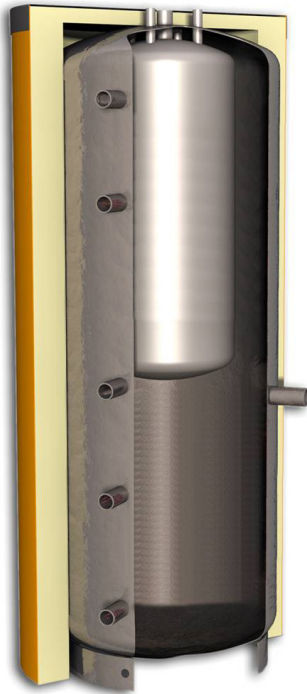
ELLEGI S.r.l.

Via II^a Strada, 19 - 35026 Conselve (PD)

Tel. +39 049 9501692

info@ellegisistemi.com - www.ellegisistemi.com

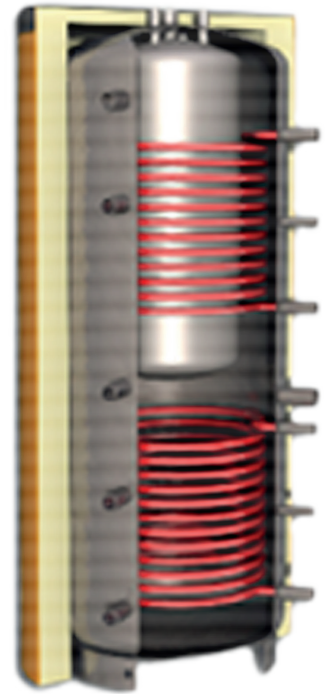
HEATER BUFFER TANKS



KB



KBS



KBSS

BUFFER TANK

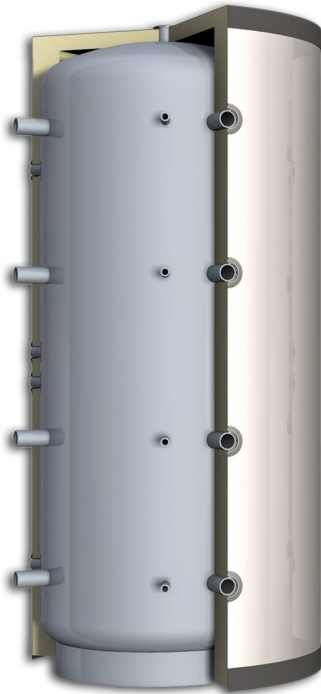
art. KB D.H.W. tank.

art. KBS D.H.W. tank, with one fixed coil.

art. KBSS D.H.W. tank, with double fixed coil.

| KB - KBS - KBSS | | 220/100 | 330/100 | 600/100 | 600/180 | 800/180 | 800/300 | 1000/180 | 1000/300 | 1500/300 | 2000/300 |
|------------------------------|----------------------|---------|---------|---------|---------|---------|---------|----------|----------|----------|----------|
| Buffer tank nominal capacity | <i>l.</i> | 220 | 332 | 575 | 575 | 796 | 796 | 900 | 900 | 1462 | 1996 |
| Buffer tank actual capacity | <i>l.</i> | 120 | 232 | 472 | 472 | 621 | 501 | 743 | 605 | 1167 | 1605 |
| Sanitary tank capacity | <i>l.</i> | 100 | 100 | 100 | 175 | 175 | 295 | 175 | 295 | 295 | 295 |
| Diameter without insulation | <i>mm.</i> | 500 | 500 | 650 | 650 | 790 | 790 | 790 | 790 | 950 | 1100 |
| Diameter with insulation | <i>mm.</i> | 600 | 600 | 750 | 750 | 990 | 990 | 990 | 990 | 1150 | 1300 |
| Total height | <i>mm.</i> | 1385 | 1860 | 1910 | 1910 | 1805 | 1805 | 2105 | 2105 | 2320 | 2390 |
| Lower coil surface | <i>m²</i> | 1,4 | 2 | 2,4 | 2,4 | 2,6 | 2,6 | 3 | 3 | 4,1 | 4,5 |
| Upper coil surface | <i>m²</i> | - | - | 2 | 2 | 3 | 3 | 3 | 3 | 4,5 | 4,5 |

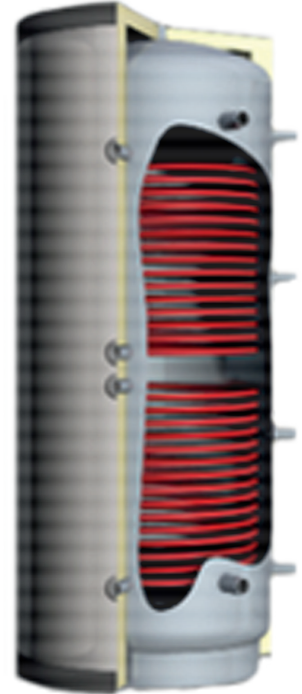
HEATER BUFFER TANKS



VT



VTR



VTRR

BUFFER TANK

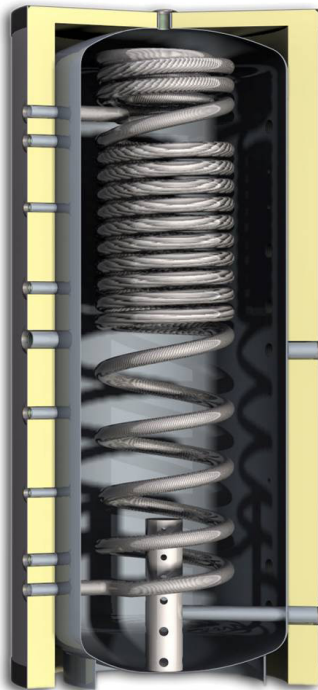
art. VT Buffer tank.

art. VTR Buffer tank, with one fixed coil.

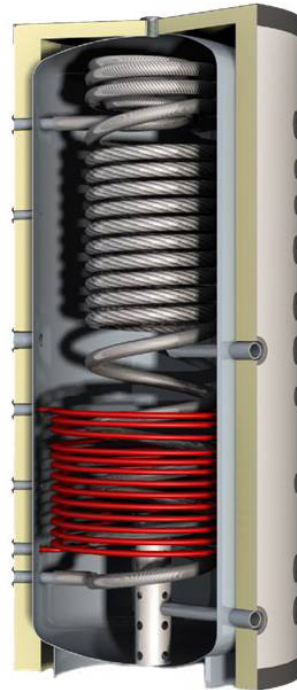
art. VTRR Buffer tank, with double fixed coil.

| VT - VTR - VTRR | | 100 | 200 | 300 | 500 | 600 | 800 | 1000 | 1500 | 2000 | 2500 | 3000 | 4000 | 5000 |
|-----------------------------|----------------------|------|------|------|------|------|------|------|------|------|------|------|------|------|
| Buffer tank actual capacity | <i>l.</i> | - | 194 | 284 | 485 | 580 | 796 | 918 | 1465 | 1996 | 2559 | 2946 | 3802 | 5033 |
| Diameter without insulation | <i>mm.</i> | 400 | 450 | 550 | 650 | 650 | 790 | 790 | 950 | 1100 | 1250 | 1250 | 1400 | 1600 |
| Diameter with insulation | <i>mm.</i> | 500 | 550 | 650 | 750 | 750 | 990 | 990 | 1150 | 1300 | 1450 | 1450 | 1600 | 1800 |
| Total height | <i>mm.</i> | - | 1300 | 1350 | 1630 | 1880 | 1805 | 2055 | 2280 | 2330 | 2420 | 2670 | 2760 | 2810 |
| Lower coil surface | <i>m²</i> | 0,50 | 0,76 | 1,50 | 2,40 | 2,40 | 2,60 | 3,00 | 4,10 | 4,50 | 4,80 | 5,30 | 6,10 | 7,10 |
| Upper coil surface | <i>m²</i> | - | 0,76 | 1,00 | 1,90 | 1,90 | 2,60 | 3,00 | 4,10 | 4,50 | 4,80 | 5,30 | 6,10 | 7,10 |

HEATER BUFFER TANKS



VRS



VRU



VRD

BUFFER TANK

art. VRS Buffer tank semirapid D.H.W. production

art. VRU Buffer tank semirapid D.H.W. production and one fixed coil.

art. VRD Buffer tank semirapid D.H.W. production and double fixed coil.

| VRS - VRU - VRD | | 300 | 500 | 600 | 800 | 1000 | 1250 | 1500 | 2000 | 3000 |
|---|----------------------|------|------|------|------|------|------|------|------|-------|
| Buffer tank actual capacity | <i>l.</i> | 330 | 530 | 580 | 840 | 970 | 1260 | 1440 | 1985 | 2910 |
| Diameter without insulation | <i>mm.</i> | 600 | 650 | 650 | 790 | 790 | 950 | 950 | 1100 | 1250 |
| Diameter with insulation | <i>mm.</i> | 700 | 750 | 750 | 990 | 990 | 1150 | 1150 | 1300 | 1450 |
| Total height | <i>mm.</i> | 1375 | 1725 | 1895 | 1940 | 2060 | 2020 | 2270 | 2350 | 2700 |
| Corrugated stainless steel tube surface for D.H.W. production | <i>m²</i> | 5,68 | 5,68 | 5,68 | 7,26 | 7,26 | 7,26 | 8,52 | 8,52 | 11,36 |
| Lower coil surface | <i>m²</i> | 1,80 | 2,20 | 2,20 | 2,75 | 3,00 | 3,00 | 4,00 | 3,30 | 4,50 |
| Upper coil surface | <i>m²</i> | 0,6 | 1,50 | 1,50 | 2,10 | 2,00 | 2,50 | 3,40 | 4,00 | 4,00 |